

# 1560 Series BT Base Quick Guide

Please refer to the user manual on CD-ROM for details on using the scanner with BT Base.

## Wall-Mount Installation

**Step 1:** Drill two holes on the wall.

Each 4.6 mm as the anchor body and centers spaced 34 mm apart.

**Step 2:** Push the plastic screw anchors into holes until they are flush with the wall.

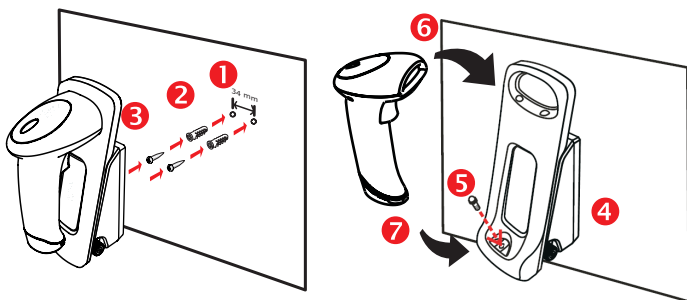
**Step 3:** Drive the screws into holes and secure them snugly, but do not over-tighten them.

**Step 4:** Mount the base by sliding it over the screws.

**Step 5:** Apply the lock screw.

**Step 6:** Hook the scanner into the holder at a proper angle.

**Step 7:** Push down the scanner grip to seat it firmly.



**Note:** Detach the scanner in reverse order — pull up from the bottom of the scanner and move the scanner head away at a proper angle, say 75 degrees.