

# STORE CLERK SARA AT WORK

This is a story about a clothing sales clerk, Sara, who is going to do daily inventory checks with CipherLab 8200 Mobile Computer.



It's 7 o'clock in the evening. The shop is going to be closed.



Before I leave the shop, I need to do a full inventory count.

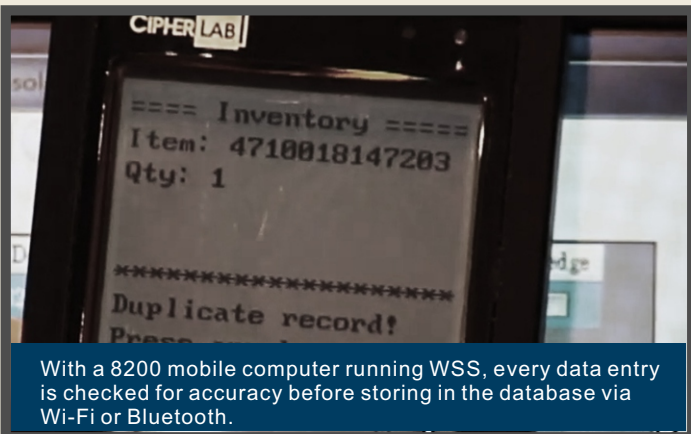


Usually Lisa teams up with me to speed up the process. But I always have a concern that we might scan the same piece twice accidentally.



Thanks to CipherLab Wireless Smart Scan (WSS).

It helps to eliminate tedious inventory recounts so as to improve stocktaking efficiency.

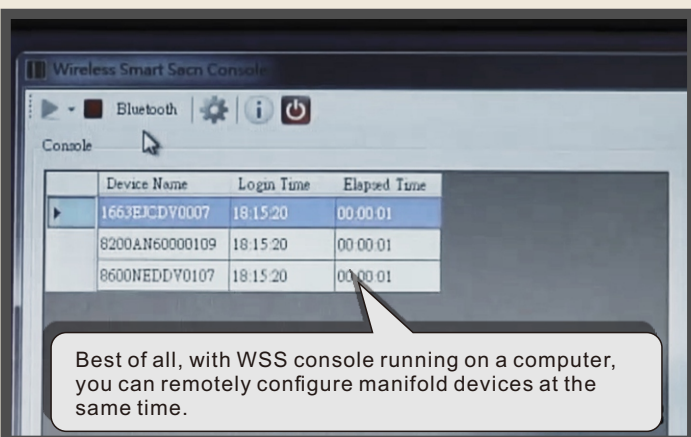


```
==== Inventory ====
Item: 4718818147203
Qty: 1
*****
Duplicate record!
Press
```

With a 8200 mobile computer running WSS, every data entry is checked for accuracy before storing in the database via Wi-Fi or Bluetooth.



In short, the device will receive instant feedback if this is a duplicate scan.



Device Name	Login Time	Elapsed Time
1663EJCDV0007	18:15:20	00:00:01
8200AN60000109	18:15:20	00:00:01
8600NEDV0107	18:15:20	00:00:01

Best of all, with WSS console running on a computer, you can remotely configure manifold devices at the same time.



Alright, all data entries are explicitly validated and updated properly. Let's call it a day.

**-The End-**



WSS supports 8230/8260/8630/8660 mobile computers and 1600 series scanners.

Demo kit is available. Please contact CipherLab sales representative for assistance.