



wavelink® Avalanche™ and Emulators

» Wavelink® Avalanche™ combines Mobility Center, a management console for control and configuration, CE Secure and Remote Control in an integrated system designed to simplify mobile device management and reduce total cost of ownership.

Wavelink® Emulators are for industry-standard IBM® 3270, 5250, VT100/110/220/330, and HP® systems. Wavelink® Emulators quickly expand the capabilities of Windows®-based mobile devices to meet the needs of multiple types of mainframe environments.



SIMPLIFY, MANAGE, AND PROTECT
YOUR MOBILE NETWORK



wavelink® Avalanche™ and Emulators

With explosive growth of WLANs and remote, roaming mobile computers throughout an enterprise, IT departments must manage and protect the devices, their users, and the wireless networks they access.

A Comprehensive Solution

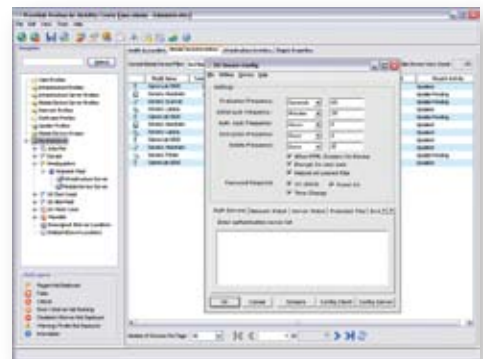
A multi-component solution, Wavelink® Avalanche™ was designed to solve enterprise-level mobile device management issues and make remote management easier and more efficient. Remote management, device security, and on-line help-desk support are powerful tools to keep devices on-line and users productive. Wavelink® Avalanche™ minimizes maintenance costs with reduced visits to end-devices or returns for upgrades, while maximizing device security and protection of device-resident, sensitive data, and applications.

Manage Devices and the Network

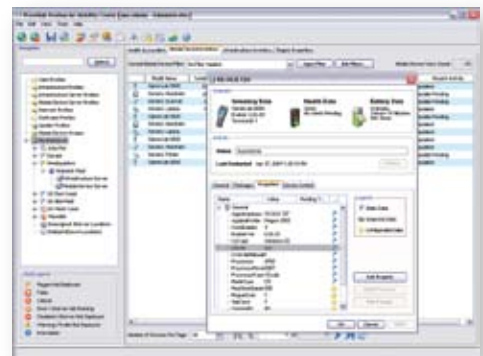
If it can be managed remotely, Wavelink® Avalanche™ gives you the tools to do it. Configure operation and security parameters, deploy upgrades, and enforce security policies—whether the end-device is a WLAN access point, PDA, or CipherLab mobile computer. Avalanche™ MC allows you to visually assess network conditions—capacity, utilization, signal quality, and more—and set specific performance thresholds that must be maintained. Faults trigger alerts to administrators and enterprise network management systems, such as HP OpenView.™

Continuous Protection Against Threats

Mobile devices are under constant security threats—both electronic and physical—and present vulnerable points in an enterprise’s wireless infrastructure. Wavelink® Avalanche™ MC enables IT to maintain and enforce strong and strict security policies. WPA keys, automatic WEP key rotation, and detection of rogue devices and access points protect against unauthorized network access. With Wavelink® CE Secure, administrators can define powerful security models that ensure users authenticate at various times, from power up to administrator-set frequencies, to gain access to the device, data, and applications. If the device cannot locate a security server, Wavelink® Avalanche™ CE Secure can lock down the device and encrypt files to protect against unauthorized use and access to data should the device be misplaced, lost, or stolen.



AVALANCHE™ CONSOLE WITH CE SECURE DIALOG



MANAGE WIRELESS LANS FROM ONE LOCATION AND VIEW DETAILED INFORMATION ON EACH DEVICE



CENTRALLY CONFIGURE, DEPLOY AND UPDATE OUR EMULATION SOFTWARE ACROSS ALL YOUR DEVICES

WITH WAVELINK® AND A WIRELESS CIPHERLAB MOBILE COMPUTER, YOU'RE IN CONTROL OF EVERY DETAIL, FROM SUPER PETITE TO TRIPLE EXTRA LARGE

AVALANCHE™ MC (MOBILITY CENTER)

Comprehensive management console and end-device agent designed to manage remote devices and their settings, and to configure and enforce security policies.

- ▶ Easily manage Windows®-based CipherLab mobile computers and other vendors' equipment in a single infrastructure of heterogeneous devices: mobile computers, PDAs, WLAN access points, and more
- ▶ Continually enforce WLAN security by setting and enforcing security configurations and detecting rogue access points and devices
- ▶ Quickly deploy updates to multiple devices using scripts and global profiles based on key characteristics, such as device model, location, and other parameters

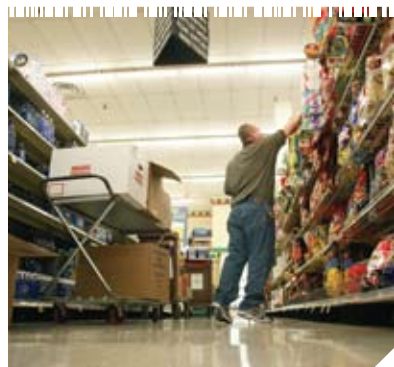


ANY FAST-PACED OPERATION WILL BENEFIT FROM INSTANTLY UPDATED DATA. WLAN BRINGS THE POWER TO EVERY WORKER

AVALANCHE™ CE SECURE

Security agent for Windows® CE designed to institute tight security configurations that constantly protect the device and its data.

- ▶ Increase protection against unauthorized access with custom user log-ins that prevent access to the device's applications and data
- ▶ Add greater protection with device lockdown that prevents access to the device when it is not in a "secure" state
- ▶ Flexible definitions for "secure" state models let administrators tailor security conditions to their specific needs
- ▶ Powerful encryption protects files when the device is not in a secure state



WITH A DIRECT LINK TO BACK-OFFICE MANAGEMENT SYSTEMS, EVEN ROUTINE PRICE CHECKING IS FASTER AND MORE ACCURATE

AVALANCHE™ RC (REMOTE CONTROL)

Help-desk console and agent allow administrators to easily and effectively respond to user help requests—by remote control.

- ▶ More effectively help end-users by seeing (and controlling) exactly what they see on their device, including device and application functionality, so you can replicate problems and quickly determine a solution
- ▶ Examine system parameters and files, such as Windows® registry, to get to the core of the problem
- ▶ Repair and update files, remotely restart the device, and log activities to provide full service and get users back on task quickly

WAVELINK® EMULATORS

Expand device capabilities with powerful emulators for more systems: IBM®, VT, and

- ▶ HP®-based terminal servers
- Industry-standard emulation software for greater reliability to
- ▶ keep workers on task longer
- Tightly integrate with Wavelink® Avalanche™ to remotely configure,
- ▶ update, and manage terminals

Using a CipherLab terminal, support legacy systems with Wavelink® Emulators while migrating to Windows®-based business environments

**WAVELINK® AVALANCHE™ IS A WORLD-TESTED
AND ENTERPRISE-PROVEN SOLUTION FOR
LEADING-EDGE BUSINESS COMMUNICATIONS**

WAVELINK® _ Avalanche™ and Emulators

for use with Windows®-based CipherLab mobile computers

Wavelink® Avalanche™ Mobility Center (MC)

| | |
|--|--|
| Flexible navigation | Visualize and monitor the entire WLAN from a central console where a geographical map shows alerts and events |
| Profile-based configuration | Simplifies and accelerates deployments of configurations and upgrades, reducing TCO |
| Compatible with enterprise network management tools | Easily integrates with system management consoles, like HP OpenView™ or CA Unicenter™ |
| Proactive protection | Constant monitoring and built-in responses help remedy common problems automatically, without administrator intervention |

Wavelink® Avalanche™ CE Secure

| | |
|--|--|
| Always-on protection | Resident agent constantly monitors the device and protects access |
| Powerful, flexible security model | IT can enforce strong security on remote devices |
| Complete lockdown | Protect against unauthorized access and abduction by locking down and encrypting sensitive data when the unit is considered unsecure |

Wavelink® Avalanche™ Remote Control (RC)

| | |
|---|--|
| Built-in, always-on user help | Keep users productive and satisfied |
| Fully functional device skins with comprehensive control | Replicate user problems on the console and solve problems sooner |
| Simultaneous multi-end-user support | Increase productivity and shorten training and adoption |

Wavelink® Emulators

| | |
|---------------------------------------|--|
| Multi-system emulation support | Access to mainframes based on IBM®, VT, and HP® terminal services provide flexibility for mobile users |
|---------------------------------------|--|



CipherLab 9400 and 9500 series

©2010 CipherLab Co., Ltd. All specifications are subject to change without notice. All rights reserved. All brand, product and service, and trademark names are the property of their registered owners.



HEADQUARTERS
 CipherLab Co., Ltd.
 12F, 333 Dunhua S. Rd., Sec. 2
 Taipei, Taiwan 10669
 Tel +886 2 8647 1166
 Fax +886 2 8732 3300
www.cipherlab.com

CipherLab China
 Suite 1305, 1065A, Jaojiabang Rd.
 Xuhui District, Shanghai,
 China 200030
 Tel +86 21 3368 0288
 Fax +86 21 3368 0286

CipherLab USA
 2552 Summit Avenue
 Plano, Texas USA 75074
 Tel +1 469 241 9779
 Toll Free 888 300 9779
 Fax +1 469 241 0697

CipherLab Central Europe
 Willicher Damm 143-145
 41066 Mönchengladbach
 Germany
 Tel +49 2161 56230 0
 Fax +49 2161 56230 22