

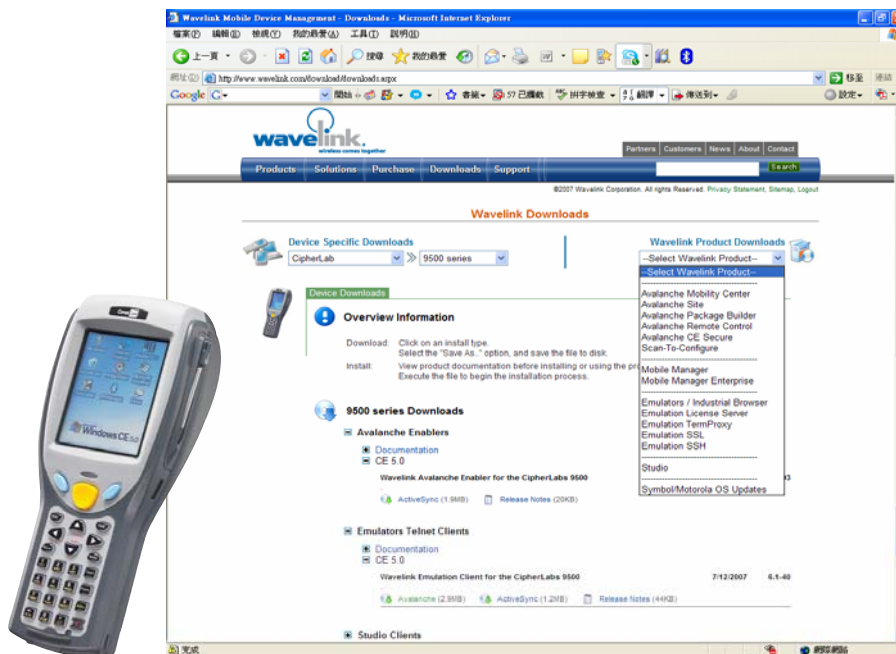
Wavelink Supports CipherLab 9500CE Series Mobile Computers

Wavelink Avalanche combines Mobility Center, a management console for control and configuration, CE Secure and Remote Control in an integrated system designed to simplify mobile device management and reduce total cost of ownership.

Wavelink Emulators are for industry-standard IBM 3270, 5250, VT100/110/220/330, and HP systems. Wavelink Emulators expand the capabilities of Windows-based mobile devices to meet the needs of multiple types of mainframe environments.

Effective immediately, CipherLab 9500CE users may visit Wavelink website <http://www.wavelink.com/download/downloads.aspx> and register to download Avalanche Enabler¹ and Emulators Telnet Client. With Avalanche Enabler in the device, 9500CE users may further download other Avalanche programs for free trial up to 30 days as well as Emulators. Product purchase and licensing will be required beyond the trial period.

Please contact sales representatives for more information.



¹ CipherLab 9500CE Series will be pre-installed with Avalanche Enabler starting from August 1, 2007.